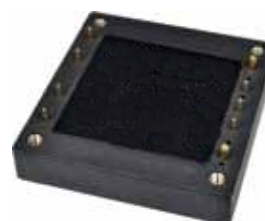


SYHD50 SYHD75 SYHD100 SYHD150

SYHD200 Series



General Characteristics

- Half Brick Industry Standard Footprint
- 2:1 Input Voltage Range
- Baseplate Temperature -40~+100°C
- I/O-isolation 1500Vdc
- Output Short-circuit Protection, Self recovery
- Remote On/Off Control



Model Selection Guide

| Product Model | Input Voltage Range (Typical) | Output Voltage (Vdc) | Output Current (A) | Efficiency (%) |
|---------------|-------------------------------|----------------------|--------------------|----------------|
| SYHD50-24S12 | 18~36 (24Vdc) | 12 | 4.17 | 86 |
| SYHD50-24S15 | | 15 | 3.33 | 86 |
| SYHD50-24S24 | | 24 | 2.08 | 86 |
| SYHD50-24S48 | | 48 | 1.04 | 86 |
| SYHD75-24S12 | | 12 | 6.25 | 86 |
| SYHD75-24S15 | | 15 | 5 | 86 |
| SYHD75-24S24 | | 24 | 3.13 | 86 |
| SYHD75-24S48 | | 48 | 1.56 | 86 |
| SYHD100-24S12 | | 12 | 8.33 | 86 |
| SYHD100-24S15 | | 15 | 6.67 | 86 |
| SYHD100-24S24 | | 24 | 4.17 | 86 |
| SYHD100-24S48 | | 48 | 2.08 | 86 |
| SYHD150-24S12 | | 12 | 12.5 | 86 |
| SYHD150-24S15 | | 15 | 10 | 86 |
| SYHD150-24S24 | | 24 | 6.25 | 86 |
| SYHD150-24S48 | | 48 | 3.13 | 86 |
| SYHD200-24S12 | | 12 | 16.7 | 87 |
| SYHD200-24S15 | | 15 | 13.3 | 88 |
| SYHD200-24S24 | | 24 | 8.33 | 89 |
| SYHD200-24S48 | | 48 | 4.17 | 87 |
| SYHD50-48S12 | 36~72 (48Vdc) | 12 | 4.17 | 87 |
| SYHD50-48S15 | | 15 | 3.33 | 87 |
| SYHD50-48S24 | | 24 | 2.08 | 87 |
| SYHD50-48S48 | | 48 | 1.04 | 88 |
| SYHD75-48S12 | | 12 | 6.25 | 87 |
| SYHD75-48S15 | | 15 | 5 | 87 |
| SYHD75-48S24 | | 24 | 3.13 | 87 |
| SYHD75-48S48 | | 48 | 1.56 | 87 |
| SYHD100-48S12 | | 12 | 8.33 | 87 |
| SYHD100-48S15 | | 15 | 6.67 | 87 |
| SYHD100-48S24 | | 24 | 4.17 | 88 |
| SYHD100-48S48 | | 48 | 2.08 | 87 |
| SYHD150-48S12 | | 12 | 12.5 | 87 |
| SYHD150-48S15 | | 15 | 10 | 87 |

| Product Model | Input Voltage Range (Typical) | Output Voltage (Vdc) | Output Current (A) | Efficiency (%) |
|------------------|-------------------------------|----------------------|--------------------|----------------|
| SYHD150-48S24 | 66~160 (110Vdc) | 24 | 6.25 | 87 |
| SYHD150-48S48 | | 48 | 3.13 | 87 |
| SYHD200-48S12 | | 12 | 16.7 | 90 |
| SYHD200-48S15 | | 15 | 13.3 | 90 |
| SYHD200-48S24 | | 24 | 8.33 | 90 |
| SYHD200-48S48 | | 48 | 4.17 | 88 |
| SYHD50-110S12 | | 12 | 4.17 | 86 |
| SYHD50-110S13V8 | | 13.8 | 3.62 | 86 |
| SYHD50-110S15 | | 15 | 3.33 | 86 |
| SYHD50-110S24 | | 24 | 2.08 | 86 |
| SYHD75-110S12 | 12 | 6.25 | 85 | |
| SYHD75-110S13V8 | 13.8 | 5.43 | 86 | |
| SYHD75-110S15 | 15 | 5 | 86 | |
| SYHD75-110S24 | 24 | 3.13 | 86 | |
| SYHD100-110S12 | 12 | 8.33 | 86 | |
| SYHD100-110S13V8 | 13.8 | 7.25 | 86 | |
| SYHD100-110S15 | 15 | 6.67 | 86 | |
| SYHD100-110S24 | 24 | 4.17 | 86 | |
| SYHD150-110S12 | 12 | 12.5 | 87 | |
| SYHD150-110S13V8 | 13.8 | 10.9 | 87 | |
| SYHD150-110S15 | 15 | 10 | 87 | |
| SYHD150-110S24 | 24 | 6.25 | 87 | |
| SYHD200-110S12 | 12 | 16.7 | 87 | |
| SYHD200-110S15 | 15 | 13.3 | 87 | |
| SYHD200-110S24 | 24 | 8.33 | 88 | |

SYHD50-200 series products are controlled by positive logic signal. If the negative logic control is preferred, the suffix "P" should be added to the part no. , such as SYHD75-48S12P

Outline Diagram And Pin Out

